

High Gain Yagi Antenna (Code: PW-HGY-450/470-14)

FEATURES :

- Special designed for CDMA 450 MHz
- Input Power 100 Watts Max
- Low Cost – Small, Light Weight & Easy to Install
- TNC or N female Connectors

Specifically designed for Signal Coverage of the CDMA 450Mhz cellular communications signal. The antenna is constructed from lightweight materials suitable for pole mounting.

Specifications

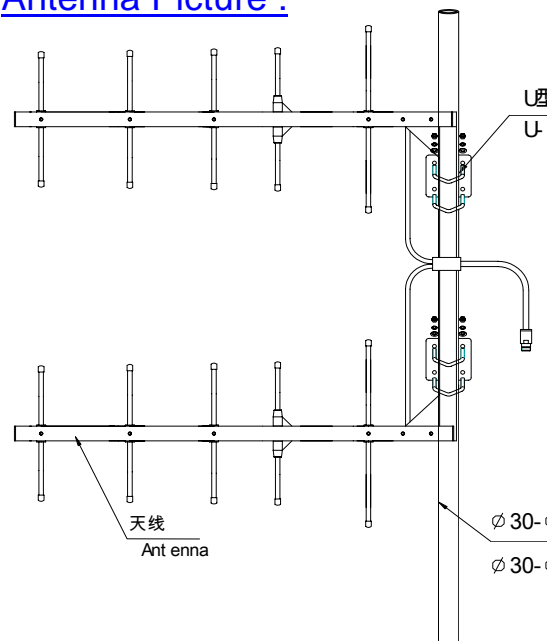
Electrical Specification :

Frequency Range	450-470Mhz
Gain	14dBi
VSWR	<1.5
Impedance	50 Ohm
Polarization	Vertical
Horizontal 3dB BW	60 degrees
Vertical 3dB BW	28 degrees
Front to back ratio	>15dB
Max Input Power	100 Watts
Connection Type	TNC or N female
Cable Type /Length	5D-FB / 15m

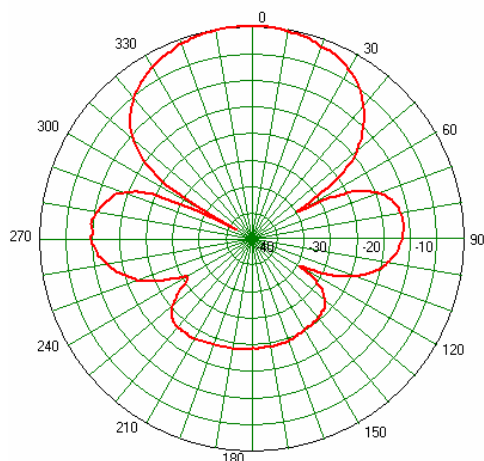
Mechanical Specification :

Dimensions	765 mm x 800mm
Weight	2.3 Kg
Rated Wind Velocity	160Km/h
Lightning Protection	Direct Ground

Antenna Picture :



Horizontal Pattern :



Vertical Pattern :

