	Single Band In-Line Amplifier For CDMA800 + GSM1800 + UMTS 2100 + CDMA1900	Code : PW-LA-Series		
		Rev 1	Issued 18/03/2008	Page 1/3

SINGLE BAND IN-LINE AMPLIFIER (LA SERIES)

Introduction

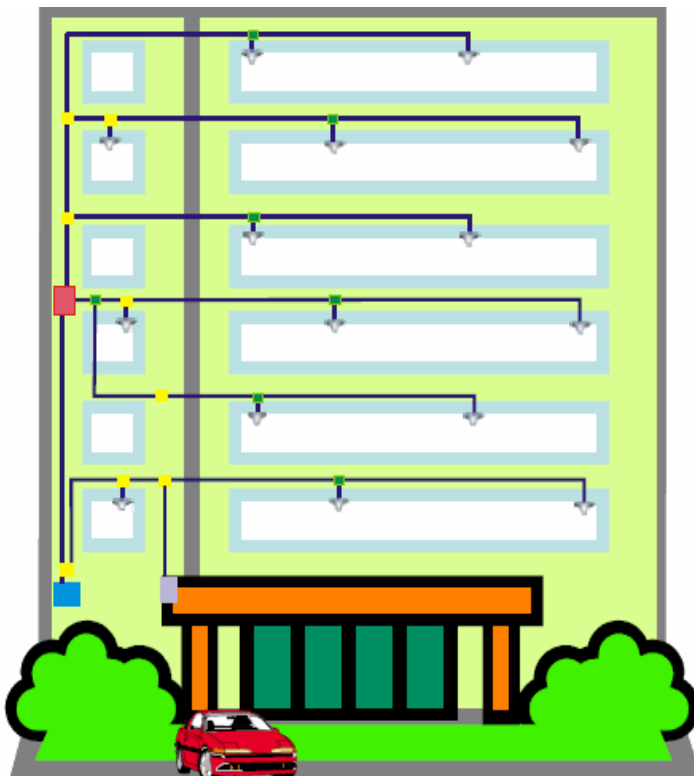



- ▶ Compact designed and light weight and cost effectiveness.
- ▶ Implemented with repeater or BTS for indoor coverage extension
- ▶ Applicable to In-Building with medium or small size with Maximum coverage up to 3000 Square meters, such as VIP room, office, house, restaurants, apartments, parking lots.
- ▶ High linearity design, simple and easy installation and maintenance
LED indication for operation status.
- ▶ Low power consumption, Low interference.
- ▶ ALC to limit output power at specified power level and ensure stable coverage effect .


Application

In some In-Building, we need of In-Line Amplifier with below conditions:

- Space Limitation inside Cable shaft/Riser.
- In-Line Amplifier is solution for cost efficiency by using small size of Feeder Cable.
- Insufficient RF Link Budget for huge or high rise building application.
- To save Number of BTS for certain site with low Cellular Traffic.



- BTS or Microcell
- Line amplifier
- Coupler
- Splitter
-  Ceiling antenna
- Panel antenna

	Single Band In-Line Amplifier For CDMA800 + GSM1800 + UMTS 2100 + CDMA1900	Code : PW-LA-Series		
		Rev 1	Issued 18/03/2008	Page 2/3

Specification

Electrical Specification

Frequency Range		
CDMA	UL:824~849MHz	DL:869~894MHz
GSM	UL:880~915MHz	DL:925~960MHz
DCS	UL:1710~1785MHz	DL:1805~1880MHz
PCS	UL:1850~1910MHz	DL:1930~1990MHz
WCDMA	UL:1920~1980MHz	DL:2110~2170MHz
Bandwidth	Wide band	
Maximum Gain	UL : ≥ 15 dB	DL : ≥ 20 dB
Output Power	≥ 15 dBm	
Spurious Emission	≤ -36 dBm (9KHz~1GHz)	
	≤ -30 dBm (1GHz~12.75GHz)	
Noise Figure	≤ 6 dB(Typical)	
Return Loss	≤ -10 dB	
Group Delay	≤ 1.5 uS	

Mechanical Specification

I/O Port	N-Female
Impedance	50 ohm
Dimensions (W x H x D)	93x92x24mm
Weight	≤ 0.5 Kg
Operating Temperature	-5°C~50°C
Environment Conditions	IP40
Switch Adapter	Input AC 90~264V

Models

LA-15-800 for CDMA 800Mhz
 LA-15-900 for GSM 900Mhz
 LA-15-1800 for DCS 1800Mhz
 LA-15-1900 for CDMA 1900Mhz
 LA-15-2100 for UMTS 2100Mhz

Note : +15dBm In-Line Amplifier suitable to provide coverage area of 600-1,200 meter square (depends on Total carrier and Building Structure).

Electrical Specification

Frequency Range		
CDMA	UL:824~849MHz	DL:869~894MHz
GSM	UL:880~915MHz	DL:925~960MHz
DCS	UL:1710~1785MHz	DL:1805~1880MHz
PCS	UL:1850~1910MHz	DL:1930~1990MHz
WCDMA	UL:1920~1980MHz	DL:2110~2170MHz
Bandwidth	Bandwidth is available upon request	
Maximum Gain	UL : ≥ 25 dB	DL : ≥ 30 dB
Manual Gain Control	31dB@1dB/Step	
Output Power	DL ≥ 25 dBm	UL ≥ 5 dBm
Spurious Emission	≤ -36 dBm (9KHz~1GHz)	
	≤ -30 dBm (1GHz~12.75GHz)	
Noise Figure	UL ≤ 5 dB(Typical)	
Return Loss	≤ -10 dB	
Group Delay	≤ 1.5 uS	


Mechanical Specification

I/O Port	N-Female
Impedance	50 ohm
Dimensions (W x H x D)	250x100x58mm
Weight	≤ 1.8 Kg
Operating Temperature	-5°C~50°C
Environment Conditions	IP40
Switch Adapter	Input AC 90~264V;Output 12V/5A

Models

LA-25-800 for CDMA 800Mhz
 LA-25-900 for GSM 900Mhz
 LA-25-1800 for DCS 1800Mhz
 LA-25-1900 for CDMA 1900Mhz
 LA-25-2100 for UMTS 2100Mhz

Note : +25dBm In-Line Amplifier suitable to provide coverage area of 1,000-4,000 meter square (depends on Total carrier and Building Structure).

	Single Band In-Line Amplifier For CDMA800 + GSM1800 + UMTS 2100 + CDMA1900	Code : PW-LA-Series		
		Rev 1	Issued 18/03/2008	Page 3/3

Electrical Specification

Frequency Range		
CDMA	UL:824~849MHz	DL:869~894MHz
GSM	UL:880~915MHz	DL:925~960MHz
DCS	UL:1710~1785MHz	DL:1805~1880MHz
PCS	UL:1850~1910MHz	DL:1930~1990MHz
WCDMA	UL:1920~1980MHz	DL:2110~2170MHz
Bandwidth	Wide band	
Maximum Gain	UL : ≥ 35 dB	DL : ≥ 40 dB
Auto Level Control	≥ 20 dB	
Output Power	≥ 33 dBm	
Spurious Emission	≤ -36 dBm (9KHz~1GHz)	
	≤ -30 dBm (1GHz~12.75GHz)	
Noise Figure	≤ 6 dB(Typical)	
Return Loss	≤ -10 dB	
Group Delay	≤ 1.5 μ s	

Mechanical Specification

I/O Port	N-Female
Impedance	50 ohm
Dimensions (W x H x D)	268x275x58mm
Weight	≤ 4 Kg
Operating Temperature	-10°C ~50°C
Environment Conditions	IP40
Switch Adapter	Input AC 90~264V

Models

- LA-33-800 for CDMA 800Mhz
- LA-33-900 for GSM 900Mhz
- LA-33-1800 for DCS 1800Mhz
- LA-33-1900 for CDMA 1900Mhz
- LA-33-2100 for UMTS 2100Mhz

Note : +33dBm In-Line Amplifier suitable to provide coverage area of 6,000-10,000 meter square (depends on Total carrier and Building Structure).